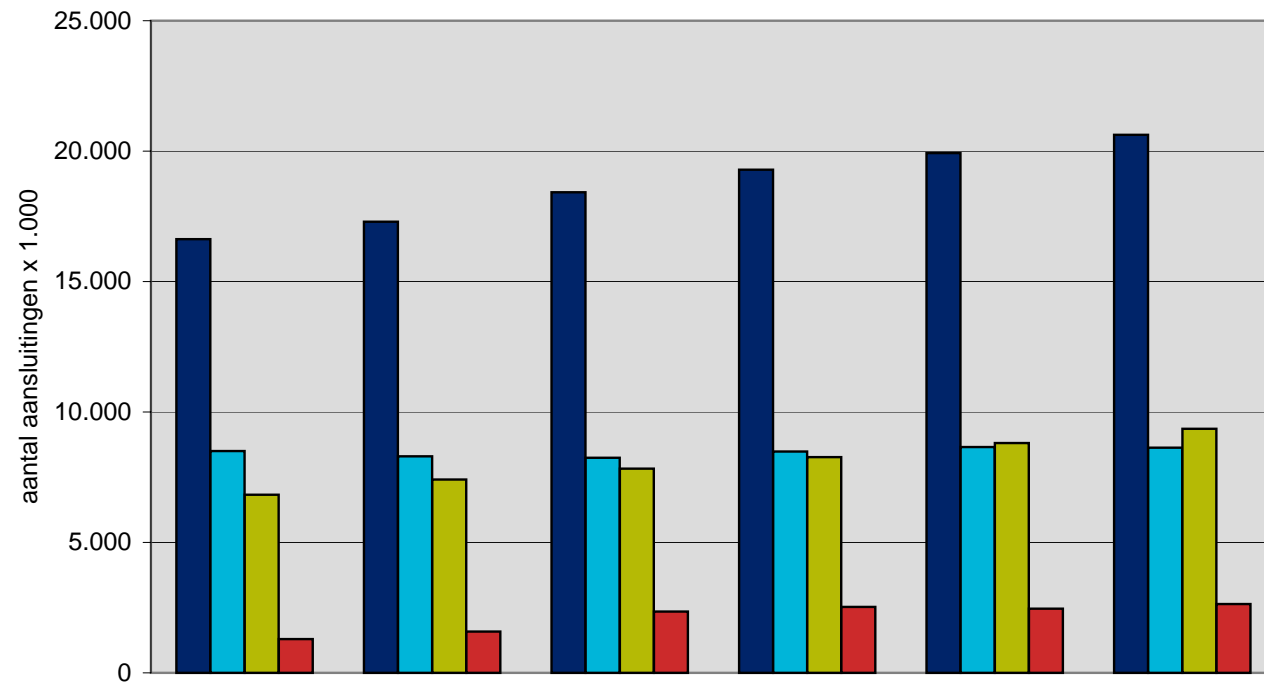


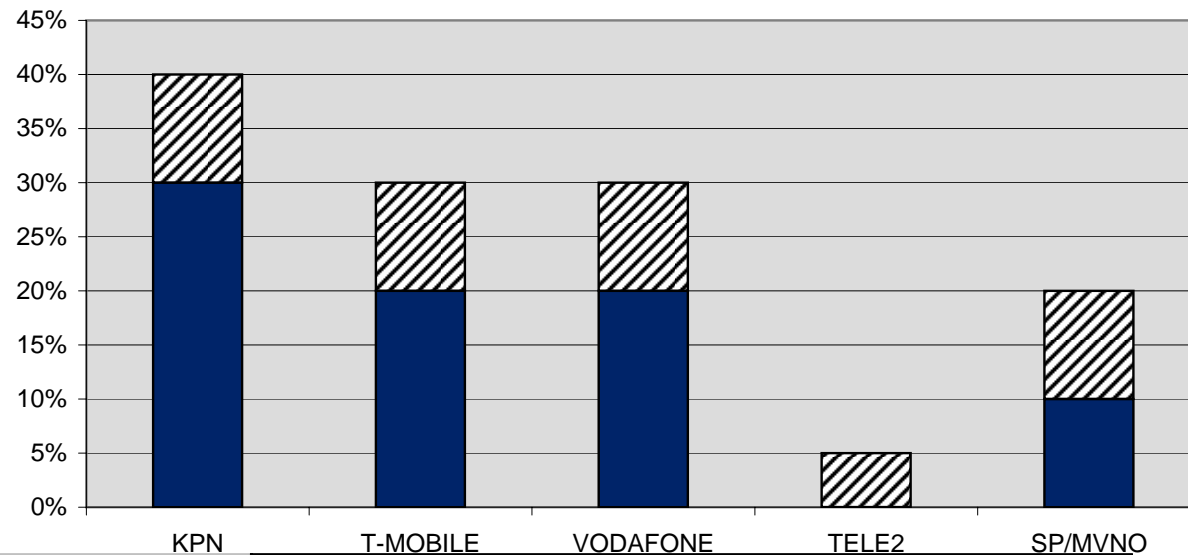


Mobiel: Aantal retailaansluitingen



	30-06-2006	31-12-2006	30-06-2007	31-12-2007	30-06-2008	31-12-2008	Verandering 08Q4/07Q4
■ Totaal aantal aansluitingen	16.628	17.296	18.425	19.285	19.927	20.627	7,0%
■ Pre-paid	8.504	8.302	8.243	8.487	8.656	8.634	1,7%
■ Post-paid	6.829	7.414	7.830	8.272	8.811	9.357	13,1%
■ Aantal aansluitingen via service providers en MVNO's (Pre-paid en Post-paid)	1.295	1.580	2.351	2.527	2.460	2.636	4,3%

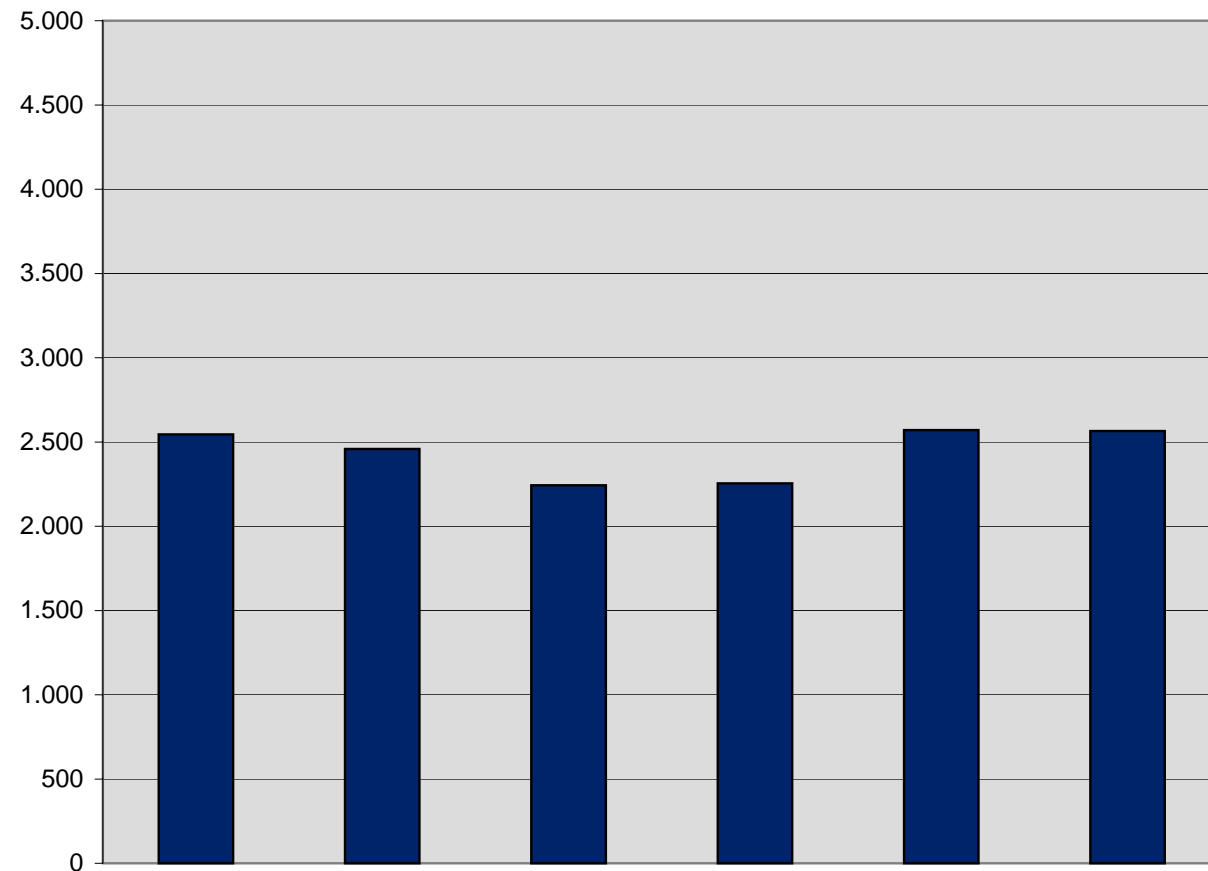
Mobiel: Marktaandelen retail aansluitingen (2008Q4)



	KPN		T-MOBILE		VODAFONE		TELE2		SP/MVNO	
	30-06-2006	31-12-2006	30-06-2007	31-12-2007	30-06-2008	31-12-2008	30-06-2008	31-12-2008	30-06-2008	31-12-2008
KPN	[40-50%]	[30-40%]	[30-40%]	[30-40%]	[30-40%]	[30-40%]	[30-40%]	[30-40%]	[30-40%]	[30-40%]
ORANGE	[10-20%]	[10-20%]	[10-20%]	[10-20%]	[10-20%]	[10-20%]	-	-	-	-
T-MOBILE	[10-20%]	[10-20%]	[10-20%]	[10-20%]	[10-20%]	[10-20%]	[20-30%]	[20-30%]	[20-30%]	[20-30%]
VODAFONE	[10-20%]	[10-20%]	[10-20%]	[10-20%]	[10-20%]	[10-20%]	[20-30%]	[20-30%]	[20-30%]	[20-30%]
TELE2 (MVNO)	[0-5%]	[0-5%]	[0-5%]	[0-5%]	[0-5%]	[0-5%]	[0-5%]	[0-5%]	[0-5%]	[0-5%]
SP's / Overige MVNO's	[5-10%]	[5-10%]	[10-20%]	[10-20%]	[10-20%]	[10-20%]	[10-20%]	[10-20%]	[10-20%]	[10-20%]



Mobiel: Herfindahl-Hirschman Index retail aansluitingen

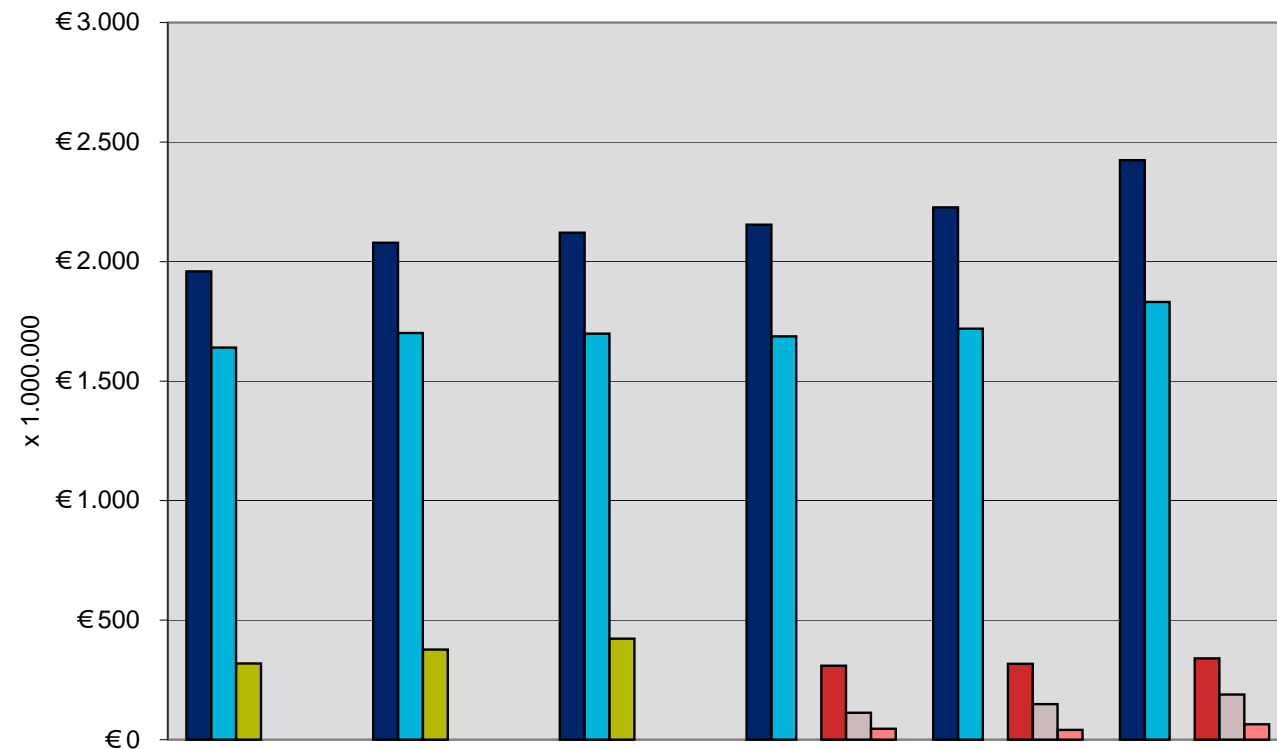


	30-06-2006	31-12-2006	30-06-2007	31-12-2007	30-06-2008	31-12-2008
■ HHI concentratie-index van totaal aantal retail aansluitingen	2.546	2.459	2.243	2.255	2.571	2.565

Op basis van gegevens van KPN, TELE2, T-MOBILE en VODAFONE. Op basis van vragen 1_A_2_1, 1_A_2_2 en 1_B_5_2 van de SMM. Aangenomen dat individuele SP's/MVNO's geen significant marktaandeel hebben.

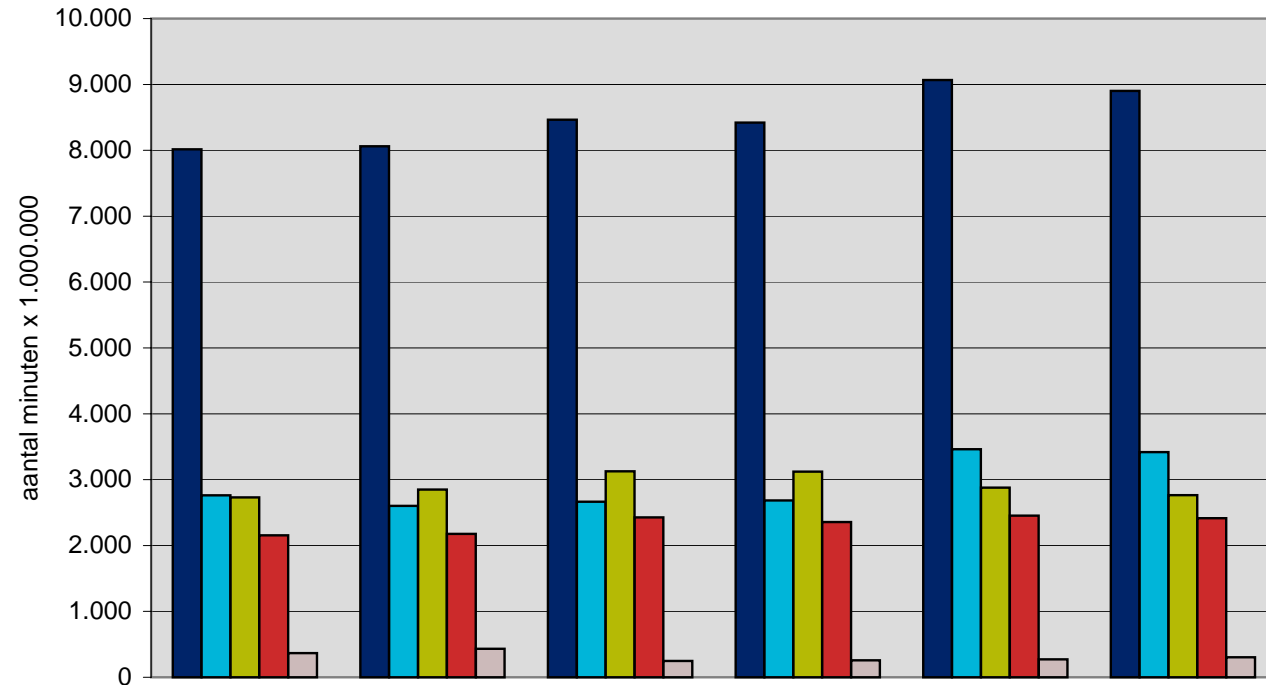


Mobiel: Omzet retail per half jaar



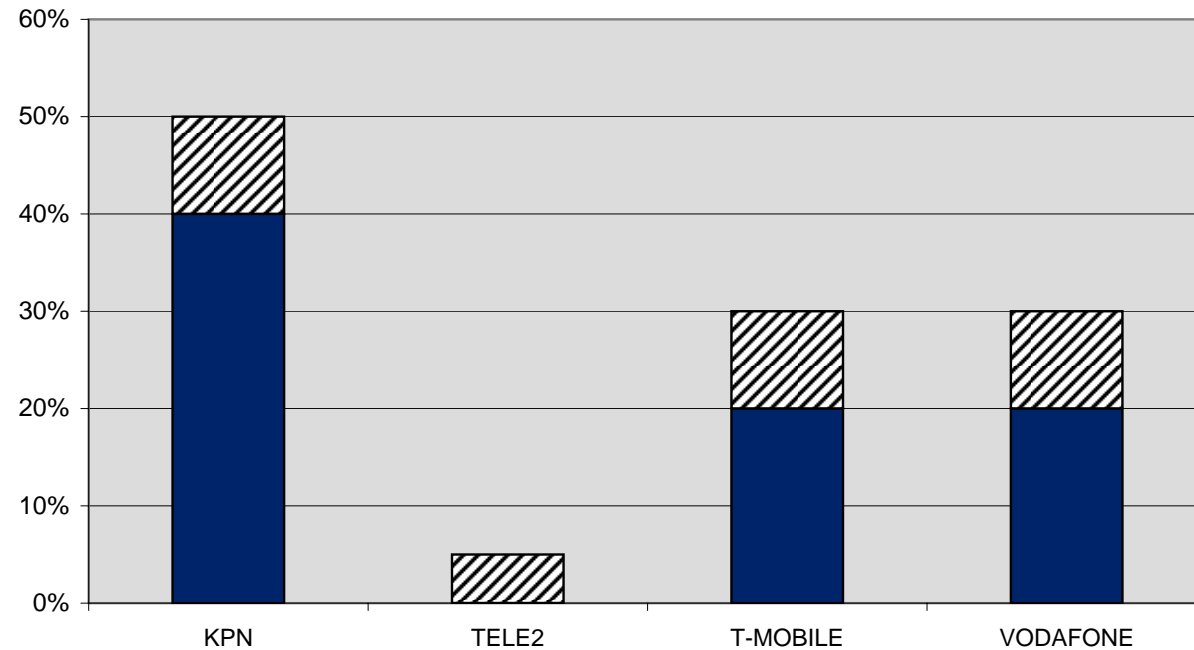
	30-06-2006	31-12-2006	30-06-2007	31-12-2007	30-06-2008	31-12-2008	Verandering 08Q4/07Q
■ Totaal	€ 1.959	€ 2.079	€ 2.121	€ 2.154	€ 2.227	€ 2.424	12,5%
■ Omzet spraakdiensten	€ 1.640	€ 1.701	€ 1.698	€ 1.687	€ 1.719	€ 1.831	8,5%
■ Omzet niet-spraakdiensten	€ 319	€ 377	€ 422				
■ Omzet SMS-diensten				€ 309	€ 318	€ 340	9,9%
■ Omzet datadiensten				€ 112	€ 149	€ 189	68,2%
■ Omzet overige diensten (content)				€ 45	€ 41	€ 64	40,9%

Mobiel: Volume retail belminuten



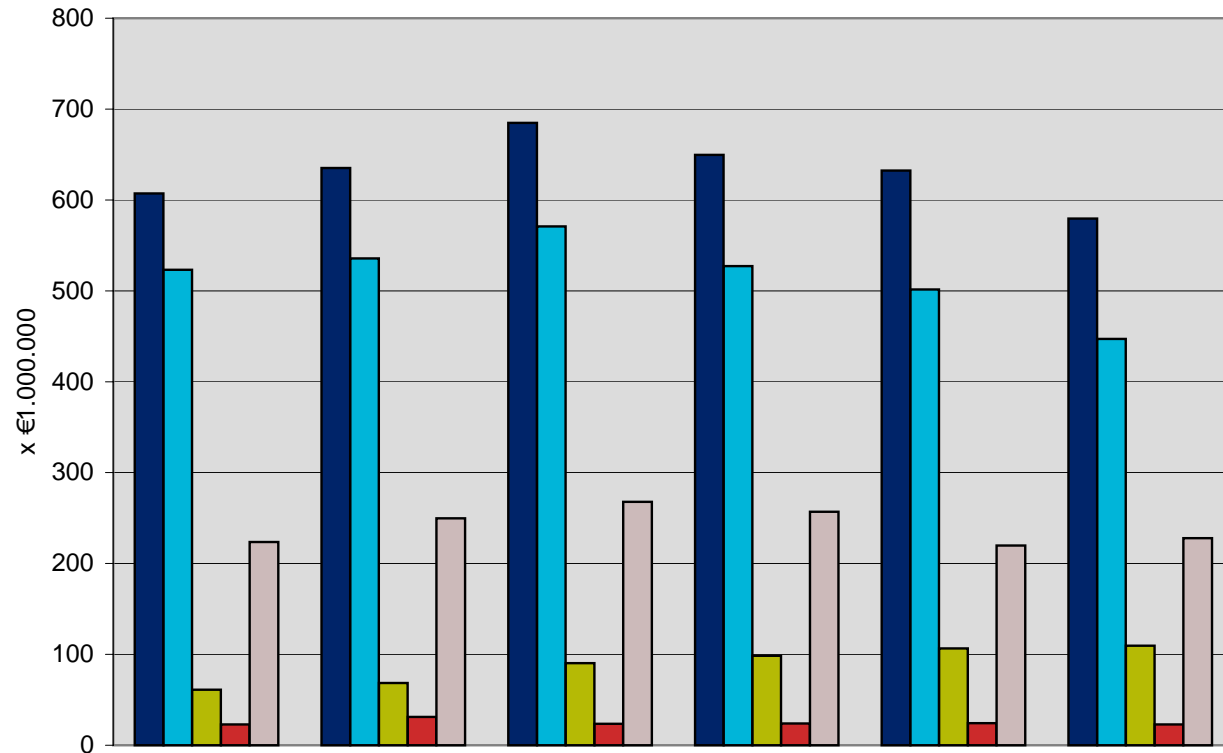
	30-06-2006	31-12-2006	30-06-2007	31-12-2007	30-06-2008	31-12-2008	Verandering 08Q4/07Q4
■ Totaal volume	8.015	8.061	8.465	8.420	9.066	8.902	5,7%
■ Volume on-net, binnen eigen mobiele netwerk	2.763	2.601	2.665	2.685	3.462	3.418	27,3%
■ Volume off-net, tussen mobiele netwerken nationaal	2.730	2.850	3.126	3.123	2.879	2.765	-11,4%
■ Volume naar vaste netwerken nationaal	2.155	2.177	2.427	2.356	2.453	2.416	2,6%
■ Volume naar het buitenland	367	432	247	257	271	304	18,1%

Mobiel: Marktaandelen op basis van totaal volume retail belminuten (2008Q4)



	KPN		TELE2		T-MOBILE		VODAFONE	
	30-06-2006	31-12-2006	30-06-2007	31-12-2007	30-06-2008	31-12-2008	30-06-2008	31-12-2008
KPN	[40-50%]	[40-50%]	[40-50%]	[40-50%]	[40-50%]	[40-50%]	[40-50%]	[40-50%]
ORANGE	[5-10%]	[5-10%]	[5-10%]	[5-10%]	-	-	-	-
TELE2	[0-5%]	[0-5%]	[0-5%]	[0-5%]	[0-5%]	[0-5%]	[0-5%]	[0-5%]
T-MOBILE	[20-30%]	[20-30%]	[20-30%]	[20-30%]	[20-30%]	[20-30%]	[20-30%]	[20-30%]
VODAFONE	[20-30%]	[20-30%]	[20-30%]	[20-30%]	[20-30%]	[20-30%]	[20-30%]	[20-30%]

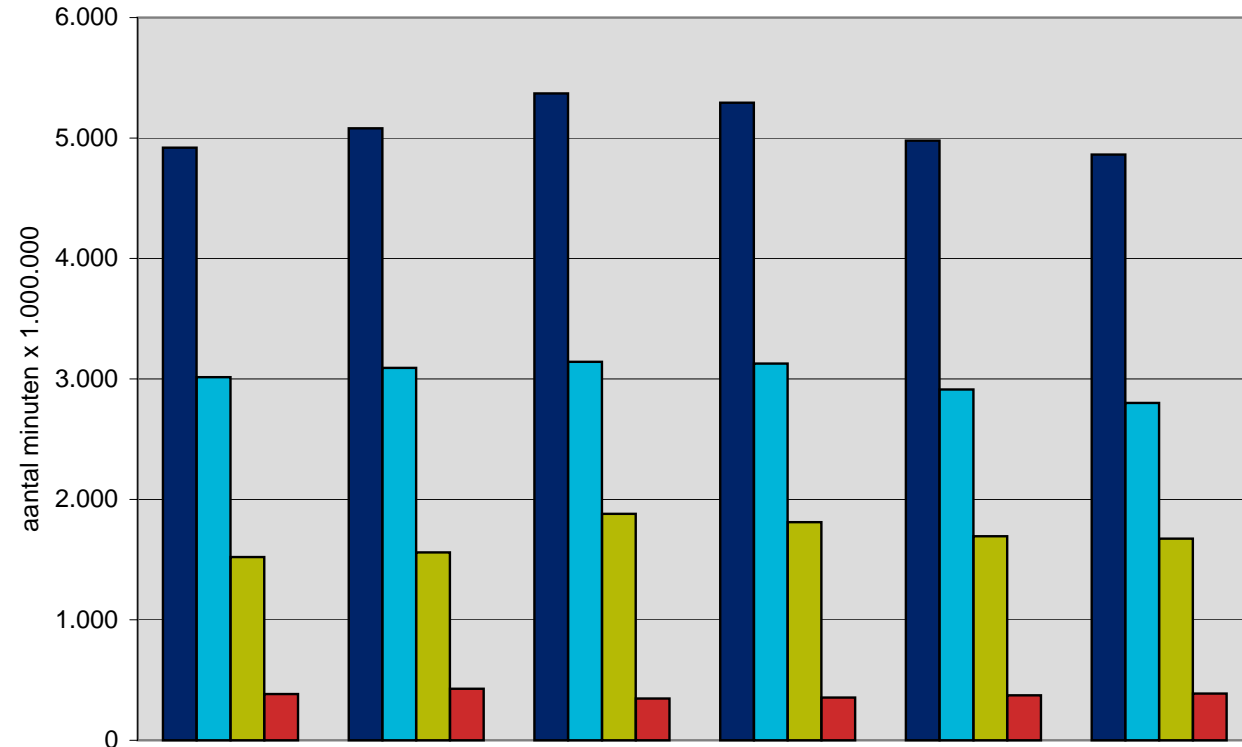
Mobiel: Omzet wholesale gespreksafgifte



	30-06-2006	31-12-2006	30-06-2007	31-12-2007	30-06-2008	31-12-2008	Verandering 08Q4/07Q4
■ Totaal omzet wholesale gespreksafgifte	607	635	685	650	632	579	-10,8%
■ Omzet gespreksafgifte spraakdiensten nationaal	523	536	571	527	501	447	-15,2%
■ Omzet gespreksafgifte niet-spraakdiensten nationaal	61	68	90	98	106	109	11,3%
■ Omzet gespreksafgifte vanuit het buitenland	23	31	24	24	24	23	- 4,4%

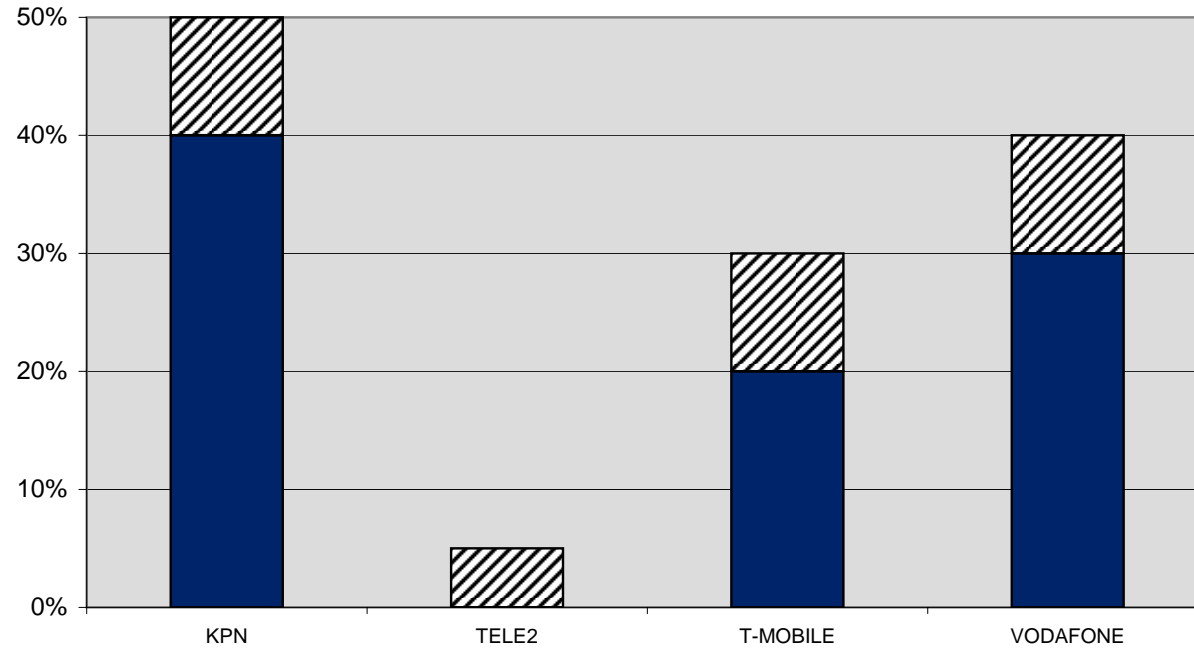


Mobiel: Volume wholesale gespreksafgifte (excl. on-net)



	30-06-2006	31-12-2006	30-06-2007	31-12-2007	30-06-2008	31-12-2008	Verandering 08Q4/07Q4
■ Totaal volume wholesale gespreksafgifte	4.920	5.080	5.370	5.293	4.979	4.863	- 8,1%
■ Volume vanaf mobiele netwerken nationaal	3.014	3.092	3.143	3.128	2.912	2.801	-10,4%
■ Volume vanaf vaste netwerken nationaal	1.522	1.560	1.880	1.811	1.694	1.674	- 7,5%
■ Volume vanuit het buitenland	384	428	347	355	373	388	9,4%

Mobiel: Marktaandelen op basis van totaal volume wholesale gespreksafgifte (2008Q4)



	30-06-2006	31-12-2006	30-06-2007	31-12-2007	30-06-2008	31-12-2008
KPN	[40-50%]	[40-50%]	[40-50%]	[40-50%]	[40-50%]	[40-50%]
ORANGE	[5-10%]	[5-10%]	[5-10%]	[5-10%]	-	-
TELE2		[0-5%]	[0-5%]	[0-5%]	[0-5%]	[0-5%]
T-MOBILE	[20-30%]	[10-20%]	[10-20%]	[10-20%]	[20-30%]	[20-30%]
VODAFONE	[20-30%]	[20-30%]	[20-30%]	[20-30%]	[30-40%]	[30-40%]